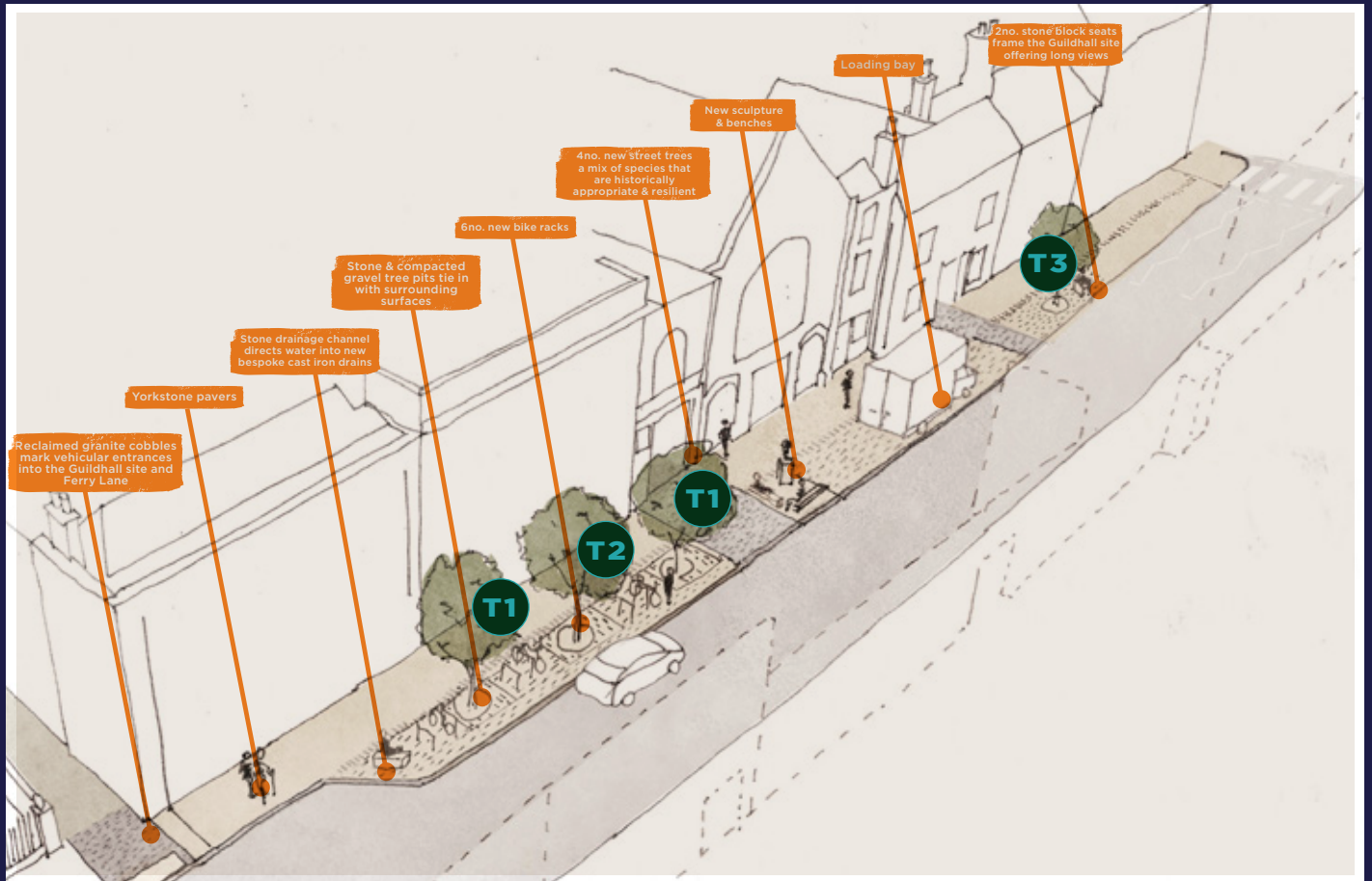


ST. GEORGE'S GUILDHALL



KING STREET

The proposed works to King Street include a widened pavement area, created by altering the carriageway layout. Mats of cobbles will mark the vehicular entrances to the Guildhall site and Ferry Lane, which leads to the River Ouse.

A variation in limestone and yorkstone paving formats will help define different areas of the public realm: Larger pavers for the main pavement area, setts for the loading bay, narrow cobbles for a new drainage channel running north to south and tree surrounds, and smaller-format pavers to identify seating areas and bicycle parking. New benches and a sculpture will be positioned outside the main entrance to the Guildhall, creating an outdoor room where people can gather. Two stone block seats will frame the Guildhall site, offering long views toward Tuesday Market Place and Purfleet Dock. Four new street trees will enhance the setting visually, improve air quality, provide shade, and support biodiversity. The selected species are robust and will complement and strengthen the historic character of the street.

Play on - every story we will tell   #playonstgeorges

FUNDED BY



OUR PARTNERS



SUPPORTED BY

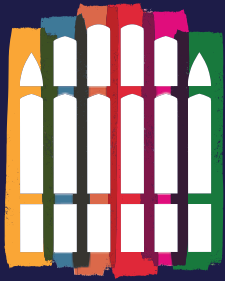


IN COLLABORATION WITH



Scan to discover more ...





ST. GEORGE'S GUILDHALL

T1



Crataegus x lavalleei
'Carrierei'

COCKSPUR HAWTHORN

The cockspur hawthorn is a robust and adaptable street tree, highly tolerant of air pollution, compacted soils, and challenging urban conditions, and able to thrive in both very dry and wet soils.

It retains its leaves well into winter, providing extended canopy cover and seasonal interest. In spring, it produces white flowers, and from autumn into winter it bears orange/red haws, offering essential food for urban pollinators and birds. Less thorny than wild hawthorns, it reaches a mature height and spread of 4 - 8m, making it well suited to constrained urban streets.

The common hawthorn (*Crataegus monogyna*) appears in Elizabethan literature and folklore as a symbol of spring, protection, and magic. While 'Carrierei' is a more recent cultivar, its characteristics: spring flowers, persistent berries, and dense branching, reflect and carry forward the ecological and cultural legacy of the traditional hawthorn.

*Gives not the hawthorn bush
a sweeter shade
To shepherds looking on
their seely sheep*

*Than doth a rich embroidered canopy
To kings that fear their subjects'
treachery?*

Henry VI, Part 3, Act 2 Scene 4

T2



Sorbus aucuparia

ROWAN

The rowan is a compact and resilient urban tree, tolerant of air pollution, compacted soils, and a range of urban conditions, and adaptable to moderately poor soils.

Its small to medium rounded form, typically reaching 6 - 10m in height 4 - 8m spread, makes it suitable for constrained streets. In spring, it produces clusters of white flowers that attract pollinators, it has delicate foliage and bears bright red berries in autumn, providing essential food to wildlife through winter, offering year-round biodiversity and seasonal interest.

As a native species, rowan has long been associated with protection, resilience, and folklore, and while it does not appear directly in Shakespeare's works, it would have been a familiar feature of Elizabethan hedgerows and woodlands. Its combination of ecological value, urban tolerance, and historical resonance makes it an appropriate choice for this setting.

*'Rowan was once widely planted
by houses as a protection against
witches. The colour red was
considered to be the best colour
for fighting evil, and so the rowan's
bright red berries have been
associated with magi
and witches'.*

The Woodland Trust

T3



Acer Campestre
'Elegant'

FIELD MAPLE ELEGANT

The Elegant cultivar of the field maple's tolerance of air pollution, compacted soils, drought, and variable moisture makes it a highly resilient urban tree.

Its Compact upright form is good for constrained street planting, reaching a mature height of 6 - 8m and a spread of 3 - 4m. As a cultivar of the native species it supports local invertebrates, pollinators, and birds, producing spring flowers and seeds that provide food for wildlife.

The native field maple (*Acer Campestre*) is associated with resilience, protection, and balance in Elizabethan folklore. While 'Elegant' is again a modern cultivar suited to today's urban environment, its characteristics continue to honour the heritage of the species and the historic significance of the site.

*'Medieval superstition said that if
you passed a maple branch over a
child, it would remove all traces of
witchcraft'.*

The Woodland Trust

HISTORY



Stone would have been sourced from other side of the Fens the Oolitic band (light yellow) running from Yorkshire down to Dorset.

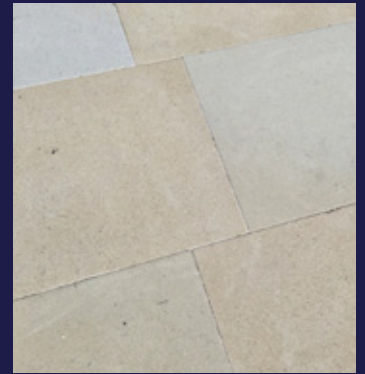
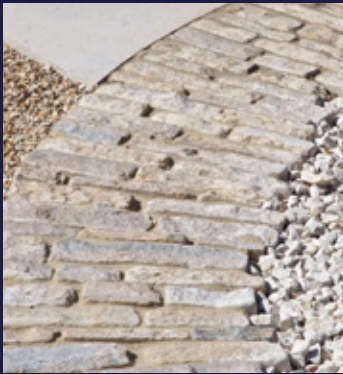


Within the wider context of King's Lynn there is strong historic precedent for the use of Limestone in the built fabric of the town, much of this would of been historically imported from the band of Oolitic limestone that runs through the wider fens.

Prominent medieval buildings such as St Margaret's Church (12th century) and St Nicholas' Chapel (late 14th century) are both faced in limestone.

Historic photographs of Tuesday Market Place show planted trees and a variety of cobbled surfaces, reflecting a rich layering of public realm treatments that the King Street scheme seeks to echo and enhance.

SURFACES



A variation in stone formats will help define different areas of the public realm - larger smooth sawn pavers will be used for the main pavement area.

Setts sawn on all sides with tumbled edges will be used to mark the loading bay, narrow cobbles with a riven texture will be used for a new drainage channel and tree surrounds and smooth sawn smaller-format pavers help to identify seating areas and bicycle parking. All materials specified for planning are subject to reviewing large sample panels on site at the next stage.

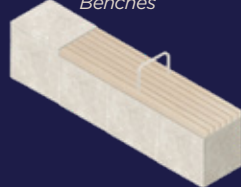
STREET FURNITURE

Stone block seat



Stone Sculpture plinth

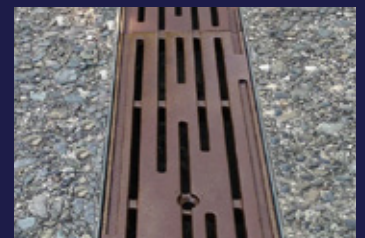
Benches



Tree Pits



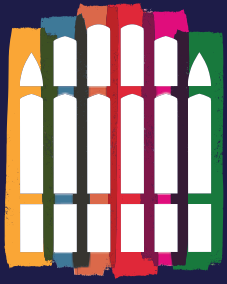
Bike stands



Drainage

Two new stone and timber benches and a sculpture on a stone plinth will be positioned outside the main entrance to the Guildhall, creating an outdoor room where people can gather.

Two additional stone seats will frame the Guildhall site, offering long views towards Tuesday Market Place and Purfleet Dock. The tree pits have a stone cobbled surround that ties in with the wider pavement finish and a compacted gravel centre of the same tone. Bespoke cast iron drain covers will line through with the new cobbled drainage channel. Robust simple bike stands will be surface mounted, for ease of install and replacement if necessary. Simple powder coated steel litter bins will have two compartments to allow for both waste and recycling collection.



ST. GEORGE'S GUILDHALL



King Street Proposed Plan 1:125



King Street Proposed Plan 1:75

View of scheme from the west of King Street - indicating extended public realm with small trees, stone and gravel tree pits, bike stands and different formats of stone paving.



View of scheme from the east of King Street - indicating extended public realm which includes a stone block seat, a tree within stone and gravel tree pit & different formats of stone paving.



Play on - every story we will tell   #playonstgeorges

FUNDED BY



OUR PARTNERS



SUPPORTED BY



IN COLLABORATION WITH



Scan to discover more ...

